



THE MEADOWS

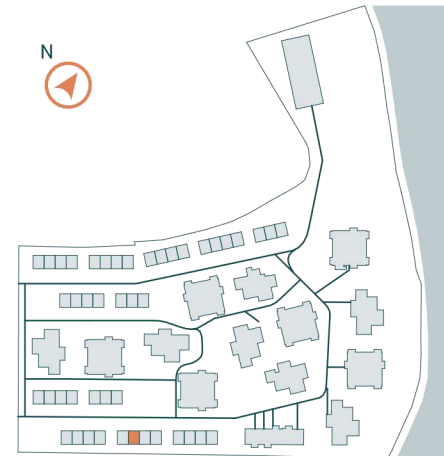
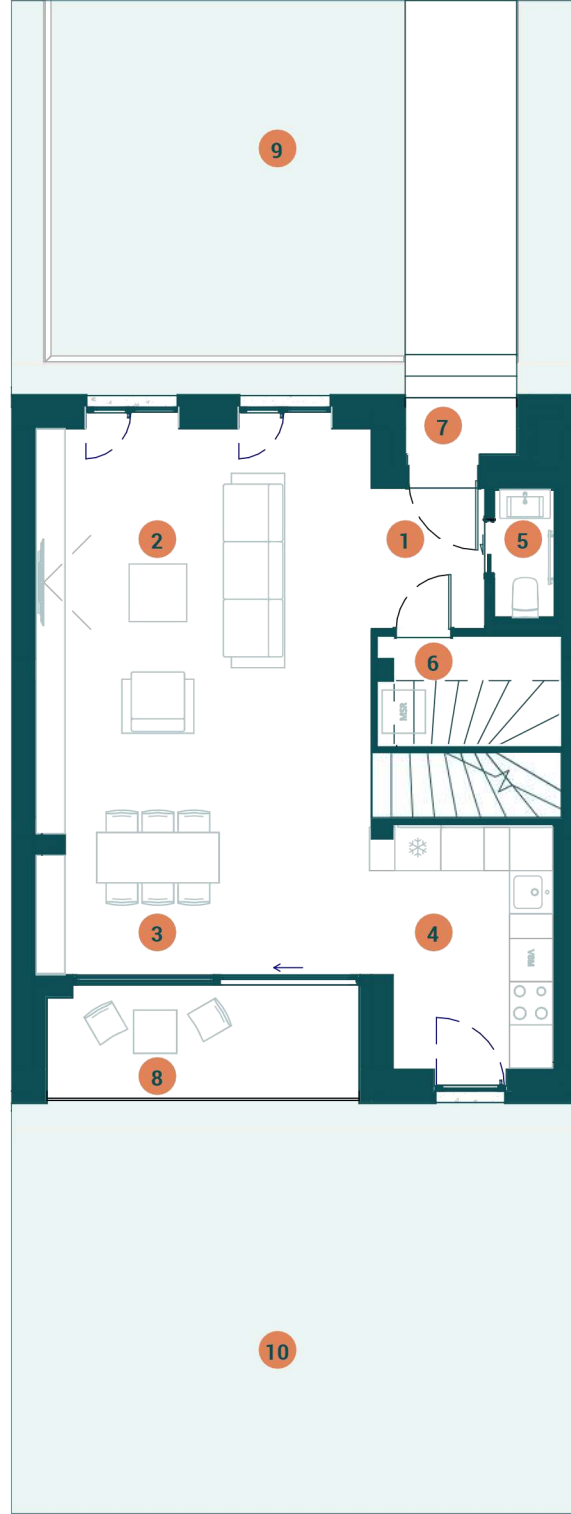
LAKEFRONT HOMES

Townhouse Plan 1T06

Level	Ground Floor
Rooms	4
Bathrooms	3

1	Windfang	3.0 m ²
2	Living	27.7 m ²
3	Dining	7.9 m ²
4	Kitchen	8.0 m ²
5	Toilet	1.5 m ²
6	Storage	3.6 m ²
Total interior		51.7 m²
7	Front porch	1.3 m ²
8	Terrace	6.3 m ²
Total terraces		7.6 m²
Total NET area		59.3 m²
9	Front lawn & Parking	44.5 m ²
10	Private garden	45.5 m ²
Total garden		90.0 m²

Developed by
SPEDWELL



DISCLAIMER: this material does not represent an offer or a contract and is for informational purposes. Due to the changes that may occur during the construction, the surfaces can be modified without prior notification, but in full accordance with any contract signed.

See next page for more info. >>>



THE MEADOWS

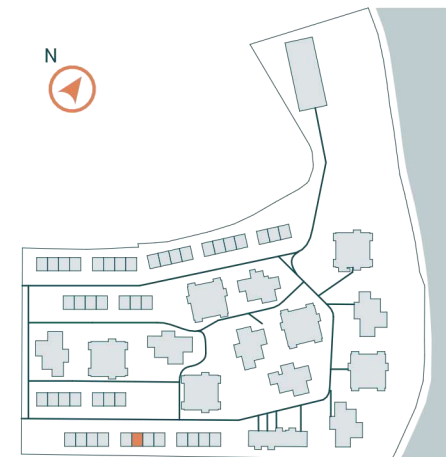
LAKEFRONT HOMES

Townhouse Plan 1T06

Level	First Floor
Rooms	4
Bathrooms	3

1 Hallway	9.2 m ²
2 Bedroom	16.3 m ²
3 Bedroom	15.3 m ²
4 Bathroom	6.1 m ²
5 Bathroom	5.0 m ²
Total interior	51.9 m²

6 Terrace	8.2 m ²
Total terraces	8.2 m²
Total NET area	60.1 m²



DISCLAIMER: this material does not represent an offer or a contract and is for informational purposes. Due to the changes that may occur during the construction, the surfaces can be modified without prior notification, but in full accordance with any contract signed.

See next page for more info. >>>



THE MEADOWS

LAKEFRONT HOMES

Townhouse Plan 1T06

Level	Top Floor (attic)
Rooms	4
Bathrooms	3

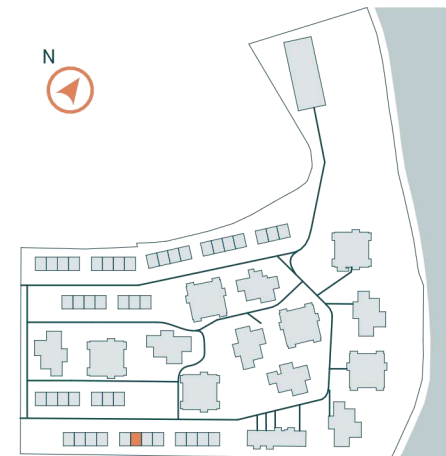
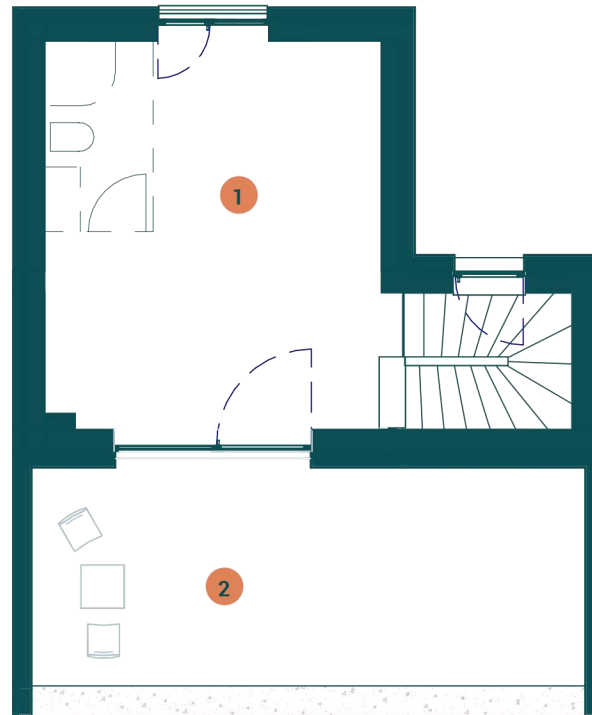
1 Attic 30.2 m²

Total interior 30.2 m²

2 Terrace 24.6 m²

Total terraces 24.6 m²

Total NET area 54.8 m²



DISCLAIMER: this material does not represent an offer or a contract and is for informational purposes. Due to the changes that may occur during the construction, the surfaces can be modified without prior notification, but in full accordance with any contract signed.

See next page for more info. >>>

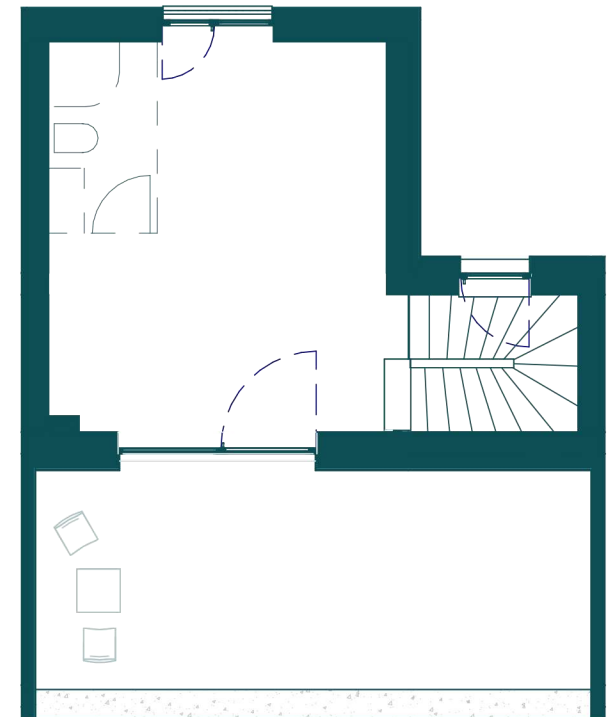
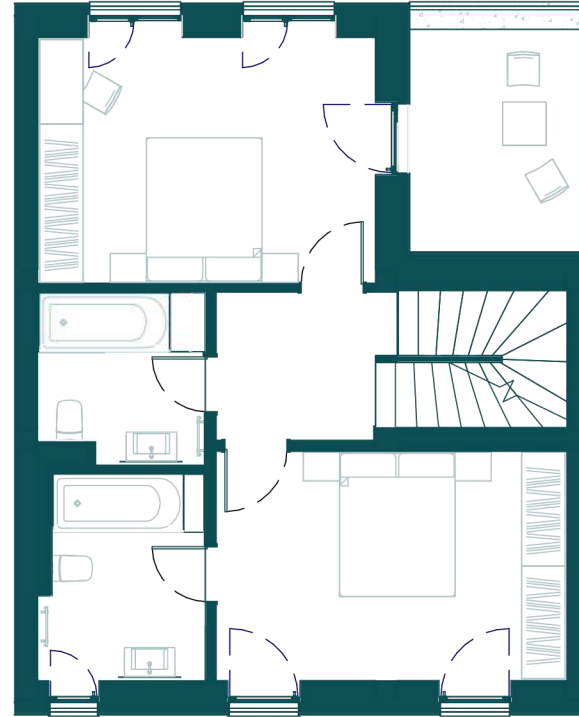
Townhouse Overview

Townhouse Plan 1T06

P+1+M; 4 Rooms; 3 Bathrooms

Total NET area 174.2 m²

Total plot surface 168.4 m²



Ground Floor

Total interior: 51.7m²

Total NET Area: 59.3m²
(including terraces)

First Floor

Total interior: 51.9m²

Total NET Area: 60.1m²
(including terrace)

Top floor (attic)

Total interior: 30.2m²

Total NET Area: 54.8m²
(including terrace)

Developed by
SPEDWELL


THE MEADOWS
LAKEFRONT HOMES

DISCLAIMER: this material does not represent an offer or a contract and is for informational purposes. Due to the changes that may occur during the construction, the surfaces can be modified without prior notification, but in full accordance with any contract signed.